



## New measurements of managing COVID infected contacts at school

In case of **POSITIVITY**, families must communicate the institute by email (school e-mail)

Please do indicate in the email **NAME, SURNAME, CLASS** and **SCHOOL COMPLEX** of the pupil.

The school will take the responsibility of communicating the class, teachers and other collaborators of the school, while the management of the **SISP / pediatrician / doctor** will take care of the pupil tested positive and of his family members.

To activate remote learning, contact the secretariat by email.

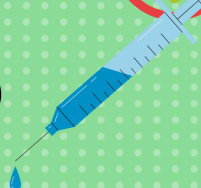


### NURSERY AND KINDERGARTEN SCHOOL

Even with only 1 **POSITIVE CASE**, all activities must be suspended.

Re-entry in the school only with negative antigenic or molecular report.

The swab is done with the documentation provided by the **SISP** in a health swab center of **ASL**.



### PRIMARY SCHOOL

With 1 **POSITIVE CASE**

Classmates must do the swab within 48 hours of identifying the positive case (**T0**). Must wait for the reports of the swab of all the classmates; in case all the swab reports are negatives then the students can return back at school carrying out a further swab after 5 days (**T5**).

The swabs are carried out with the documentation provided by the **SISP** in an **ASL** swab center or by your pediatrician / doctor. with an additional **POSITIVE CONTACT**: remote learning will be carried out for 10 days.

### SECONDARY OF FIRST AND SECOND DEGREE

with 1 **POSITIVE CASE**:

the class remains in school by using **FFP2** masks with self-surveillance, or monitoring the symptoms for 5 days;

with 2 **POSITIVE CASES**:

those who have not been vaccinated, those who have been vaccinated for more than 120 days, those who have been cured for more than 120 days will stay at home and carry out remote learning ;

the others at school must use **FFP2** masks with self-surveillance;

with 3 **POSITIVE CASES**:

The whole class will carry out remote learning for 10 days and can return back at school **AFTER** doing molecular or antigenic tests.

The test can also be done free of cost with the prescription provided by the pediatrician / doctor at the pharmacies and affiliated centers.  
<https://dovefarelittampone.it>

### FOR THOSE STUDENTS RETURNING BACK TO SCHOOL

### AFTER FAMILY/HOME QUARANTINE

they can bring to the head class teacher a certificate of negativization swab or a declaration issued by the medical authority at the end of home quarantine.

### VARIOUS

Those returning from abroad trip must follow the prophylaxis instructions provided in the website Covid-19 - Travelers ([salute.gov.it](https://salute.gov.it)) or can respond the questionnaire on <https://infocovid.viaggiareisicurl.it/>

For those who use **SCHOOL BUS**, **FFP2** mask is recommended to wear (only infants must not wear them).

